

SW718

SPEEDWAY
Eco products



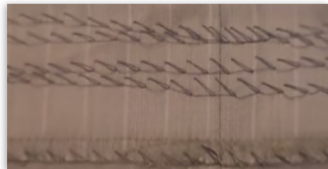
SW718

Blindstitch Blind Hemmer Sewing Machine

The machine is used for drapery or seamstress repair work. The machine is set up with a swing arm. If swung out of the way, the machine can be used as a cylinder.

Features

- Up To 2500 Stitches Per Minute
- 1 To 1 Or 2 To 1 Skip Stitch Options
- Knee Lever to insert and remove fabric
- Needle Depth Dial for truly blind hems
- Narrow Cylinder Arm
- Swing Plate Work Table with access to Cylinder Arm



Specifications

- Rugged, dependable blindstitch machine has a number of unique features for quality 1 to 1 non-skip and 2 to 1 skip stitch hemming
- Re-engineered for greater quality
- Upgraded by master technicians, this machine builds upon the technology that made the original a world leader
- New presser foot, feed, and looper is re-designed for improved material handling and stitching, this machine feeds and lays out curtain and drapery panels, sides and bottoms evenly
- New foot and looper assure positive stitching control with all threads and fabrics
- New bronze needle connection assembly is an investment-cast eccentric, fitted to a bronze strap, ground, and lapped in to form a hard, smooth bearing surface, withstands years of abrasive wear
- Hardened shafts are designed to reduce wear for a long life with minimal maintenance
Wide fabric range will handle light to medium weight fiberglass and rayons, as well as sheers
- Works with a variety of threads including monofilament