



Brochure

**SPEEDWAY  
SP100DD**

**Copyright 2016 © Supra Enterprises Corp.  
Wholesale And Retail Sewing Machines Miami FL**

Address: 7630NW 25Th St. Unit 3&4 Miami, FL 33122  
Phone numbers: Ph: (305)-406-1067 Fax: (305)-406-1068

# SPEEDWAY

# SP100DD

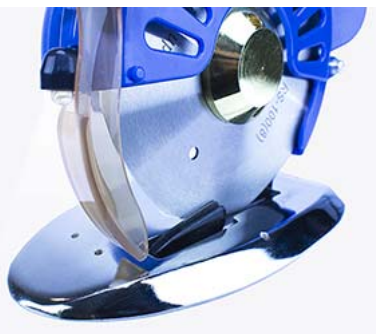
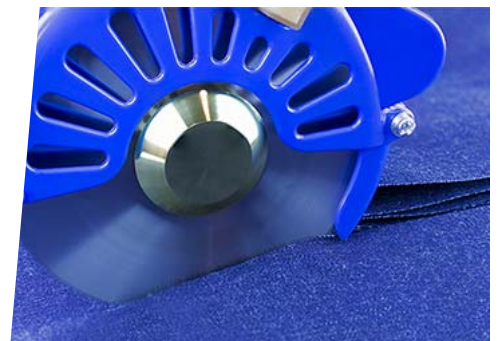


## 4" Hand-Held Knife Cloth Cutting Machine

The SD100DD is a light, versatile hand-held cutter that is easy to use and easier to learn. Its ergonomically designed body/handle/weight makes it a pleasure to use. High quality components ensure that you can count on the SP100DD for your daily cutting tasks.

### Versatile Cutter

The SD100DD will cut up to 1/4 inch in height and can handle a wide range of materials including light cotton/polyester right up to heavy denim and canvas.



### Front Knife Guard & Light

An adjustable front knife guard ensures the operator's safety.

### Built-In Sharpener

Nothing makes cutting fabric easier than a sharp blade. The SD100DD's built-in sharpener guarantees a sharp edge on every cut.





## Humanized Design

Uses the structure of human body engineering design concept, humanized design embedded software of intelligent controller and speed regulation, the constant torque running at, tailoring to force, environmental protection and energy saving LED lighting device.

## Included Accessories

The SD100DD is supplied with everything needed to get started including an instruction manual, spare blade, stone, oil, coupling and allen wrench.



## Technical Specifications

Property	Description
Voltage:	110V
Input power:	3.5W-250W
Blade size:	110mm
Cut thickness:	32mm
Speed:	600/800/1000/1200(adjustble)
Weight:	1.5/1.1kg(G.W/N.W)
Warranty:	1 Year